

National Diploma (PGDEPA)

The Institute annually conducts a national Post-Graduate Diploma in Educational Planning & Administration (PGDEPA) since 40 years. The programme is attended by the Education Officers/SCERT/DIET faculty from various States and Union Territories. Till now, the programme has been able to cover about 1350 participants.

International Diploma

The Institute has also been conducting International Diploma in Educational Planning and Administration (IDEPA) programmes for the last 36 years. About 990 participants from more than 90 countries from Africa, Eastern Europe, Asia-Pacific region and Latin America have participated in these diploma programmes.

DATABASE ON EDUCATION

Comprehensive database on school education in India covering Pre-school to grade XII, has been developed by NIEPA which is popularly known as Unified District Information System (UDISE). NIEPA has also been maintaining a Student Database Management Information system (SDMIS) since 2016.

NIEPA's Digital Archives of Education Documents has more than 12,500 documents freely available online.

PUBLICATIONS

NIEPA brings out a quarterly Journal in English, namely Journal of Educational Planning and Administration (JEPA), and Pariprekshya in Hindi. It also brings out a bi-annual Newsletter—the Asian Network of Training and Research Institutions in Educational Planning (ANTRIEP). In addition to these academic Journals, research findings are disseminated through a variety of publications, such as Research Reports, Research Monographs, Occasional Papers and Books.



CONSULTANCY

NIEPA extends consultancy support in the areas of education policy, planning and administration to the national and state governments, research institutions, international organizations/agencies.

SCHOOL STANDARDS AND EVALUATION & PROJECT MANAGEMENT UNITS

The School Standards and Evaluation Unit is leading the National Programme on School Standards and Evaluation (Shaala Siddhi) under the aegis of Ministry of Education (MoE) to institutionalise performance evaluation for school improvement and improved learning outcomes.

A Project Management Unit has also been set up by the Institute for supporting and managing in-house and sponsored research.

UNIT FOR INTERNATIONAL COOPERATION

The Unit for International Cooperation (UIC) is an integral part of NIEPA and it functions in close collaboration with the International Cooperation Cell (ICC) of the Ministry of Education (MoE). It was created with the objective to extend support to the MoE on matters related to international cooperation in education through research, documentation and advisory roles.

HINDI CELL

The Hindi Cell provides translation facilities in research, training and administration, further it helps in bringing out various publications in Hindi and implementation of the official language policy.

NETWORKING WITH NATIONAL AND INTERNATIONAL LEVEL INSTITUTIONS

Keeping pace with today's world of knowledge, the Institute has successfully created networks as well as entered into co-operation agreements with educational institutions for providing varied opportunities for disseminating and sharing educational researches and innovations. This networking not only encompasses the national and state level institutions within the country but also networking at the international level through Asian Network of Training and Research Institutions in Educational Planning (ANTRIEP), with 22 member institutions from 15 countries in the Asian Region, for providing a forum for horizontal linkages among Planning and Management institutions in the field of education.

NIEPA CAMPUS

NIEPA has a modern self-contained office building, with conference rooms, for organizing programmes and classrooms for research scholars. The Institute has two computer centers, with latest computer facilities and broadband internet connectivity, for all the members of staff of the Institute. NIEPA also has a multistoried hostel with 60 fully furnished air-conditioned rooms.

A new building of the Institute, with modern facilities and infrastructure, is proposed to be set up in the vicinity to accommodate the expanding activities of the Institute.

LIBRARY

The Institute has a specialized library and documentation centre, with approximately 60,000 books and documents on educational planning and management, and subscribing to around 250 Indian and foreign journals, and academic periodicals regularly. The library is computerized and provides on-line access to various referencing resources. As a member of DELNET, it has the facility of inter-library loan service.



RESEARCH
TEACHING
CONSULTANCY
EXTENSION
DISSEMINATION

National Institute of Educational Planning and Administration (NIEPA)

(Deemed to be University)

17-B, Sri Aurobindo Marg, New Delhi – 110016, INDIA

EPABX: 91-11-26565600, 26544800

Fax: 91-11-26853041, 26865180

Email: niepa@niepa.ac.in

Website: www.niepa.ac.in

National Institute of Educational Planning and Administration (NIEPA)

(Deemed to be University)

17-B, Sri Aurobindo Marg, New Delhi – 110016, INDIA

Designed by Digital Expressions; Printed by Archana Printers. (2T)

Our Vision

Evolving a humane learning society through advancement of knowledge.

Our Mission

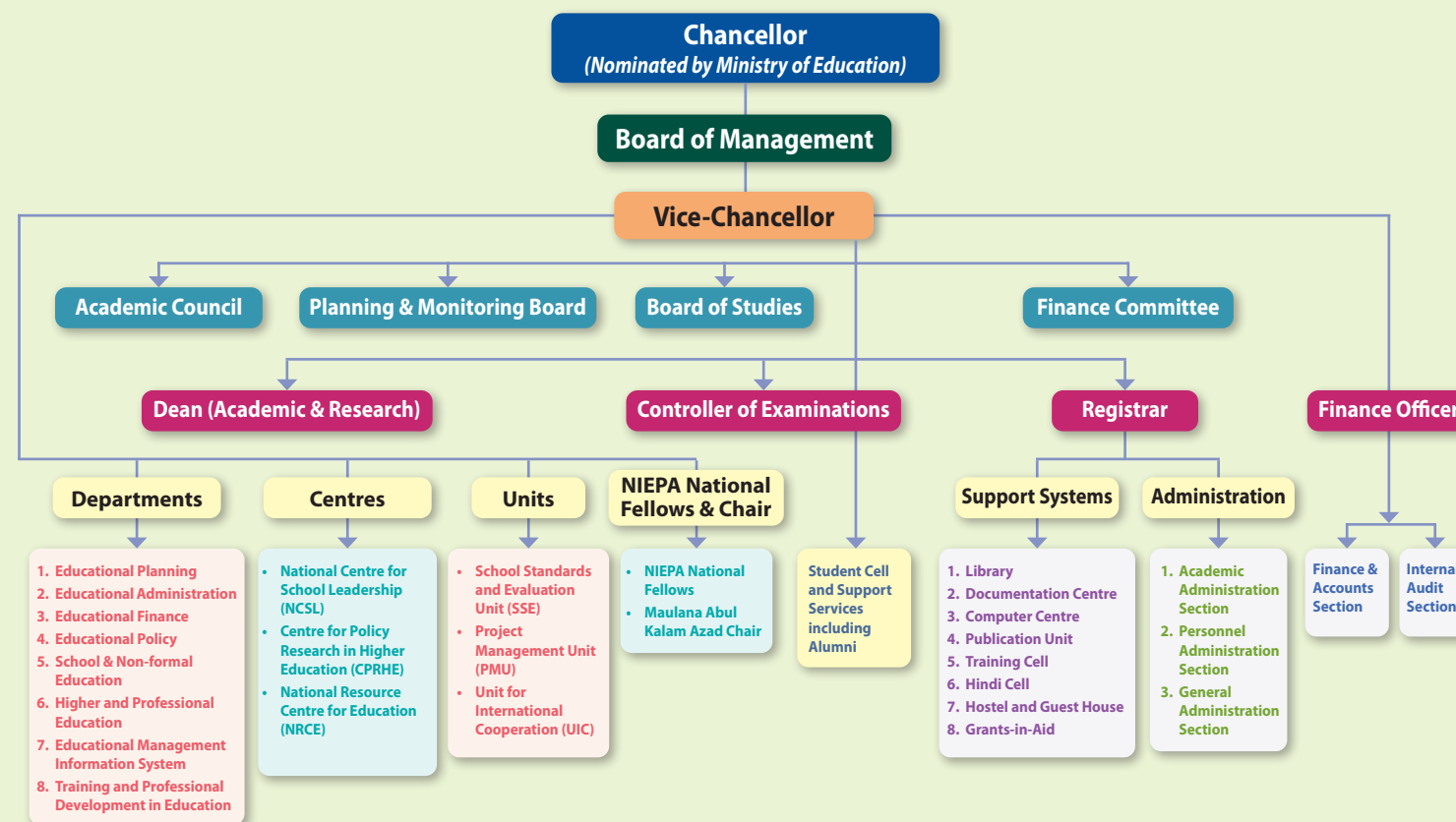
To become a centre of excellence in educational policy, planning and management by promoting advanced level teaching, research and capacity development in national and global contexts.

THE NATIONAL INSTITUTE

The beginnings of the National Institute of Educational Planning and Administration (NIEPA) can be traced back to the year 1962 when it was established as the UNESCO Regional Centre for the Training of Educational Planners and Administrators for the Asian region. It was renamed as the Asian Institute of Educational Planning and Administration in 1965. The Government of India took over the Institute in 1973 and called it the National Staff College. In 1979, it was rechristened as NIEPA, when research was added as one of the focused activities of the Institute. In recognition of the pioneering work done by the organization in the field of educational planning and administration, the Ministry of Education, Government of India, empowered NIEPA to award degrees by conferring on it the status of University in August 2006 under Section 3 of the UGC Act, 1956.



NATIONAL INSTITUTE OF EDUCATIONAL PLANNING AND ADMINISTRATION



FUNCTIONS

The National Institute is actively engaged in teaching, research and advisory services in the areas of educational policy, planning and administration. The core activities of the University include:

- Providing technical support to Central and State Governments in educational policy and planning;
- Organizing professional development programmes in educational planning and administration for educational professionals of the country;
- Developing expertise among young scholars through programmes of M. Phil. and Ph. D., as well as other capacity developing activities;
- Conducting research in all aspects of school and higher education;
- Extending advisory services to national and international organizations;
- Functioning as a clearing house for dissemination of knowledge and information; and
- Providing a forum for exchange of ideas and experiences among policy makers, planners, administrators and academics.

ACADEMIC STRUCTURE

The academic structure of the University comprises Departments, Centres, special Chairs and technical support units, which are responsible for the development and execution of activities relating to their respective programmatic thrust areas.

The Academic Departments of the National Institute are: (i) Department of Educational Planning; (ii) Department of Educational Administration; (iii) Department of Educational Finance; (iv) Department of Educational Policy; (v) Department of School and Non-Formal Education; (vi) Department of Higher and Professional Education; (vii) Department of Educational Management Information System; and (viii) Department of Training and Professional Development in Education.

The Academic Structure also includes the National Centre for School Leadership, Centre for Policy Research in Higher Education, National Resource Centre for Education under Pandit Madan Mohan Malaviya National Mission on Teachers and Teaching (PMMMNMTT), School Standards and Evaluation Unit, Unit for International Cooperation and Project Management Unit.

RESEARCH

Over the years, NIEPA has emerged as a leading centre of research in education. Findings of research studies undertaken by the faculty are further used to enrich the transactions in both the M. Phil./ Ph.D. Programmes as well as professional development programmes. NIEPA engages in real-time research database. The research explorations of the faculty and the research scholars cover a wide range of areas. The areas identified for research are based on national priorities and concerns, and attempts are made to generate empirical information directly from the field.

TEACHING AND LEARNING

NIEPA is a learning organization, striving to achieve excellence in teaching and learning imparted through its professional development programmes. As part of its professional development activities, NIEPA conducts, every year, about 150 capacity building programmes, which include long-term and short-term training programmes, seminars, conferences and meetings of senior national and international education policy makers, planners and administrators. On an average, each year, about 4000 senior planners and administrators participate in these programmes.

M. PHIL. and Ph. D. Programmes

The National Institute has been offering M. Phil/Ph.D. programmes from a broader inter-disciplinary perspective since 2007. NIEPA also provides financial support through fellowships to its students and scholars. The Master's programme in Education and Development is also ready to be rolled out in the upcoming academic session.

Post-Doctoral Fellowships

The Institute offers Post-Doctoral Fellowships in Educational Policy, Planning and Administration for a duration of upto two years to eligible candidates having Ph. D. degrees in the related areas. The fellowship is open to both fresh degree holders and persons already employed.

